

# St Theresa's Medical University



Accredited by the federation of St Christopher and Nevis





## Mission Statement

The Mission of Saint Theresa's Medical University is to promote healthcare and health science education on a global scale. In addition,

Saint Theresa's Medical University seeks to support the healthcare and educational efforts of the medical community on Saint Christopher & Nevis and to assist in the continuing improvement of healthcare.

Saint Theresa's Medical University seeks to train Physicians, Pharmacists, Pharmacologists, Research Scientists, and Educators: Providing for their community and awareness of the legal, social, and cultural problems related to varying health environments, as well as, professionals who will be sympathetic and sensitive to medical issues concerning others.

Through the provision of a strong academic background and a commitment to primary healthcare and prevention, these highly trained professionals are then expected to carry out this mission in a responsible, competent, humane, and ethical fashion.

Through professional relationships, Saint Theresa's Medical University will assist in the ongoing development of new intervention and treatments of worldwide diseases. Saint Theresa's will assist with physician shortages, pharmaceutical profession shortages, health science educators, and research scientists, as well as the ever growing need for healthcare professionals on Saint Christopher & Nevis. The University and its Board of Directors have embraced the need for planning, implementation, and ongoing assessment. To this end, Saint Theresa's Medical University has made a commitment to maintain perpetual ongoing dialogue with worldwide recognized health education organizations as well as, those involved in healthcare delivery. The University will amend its mission to meet the ever growing need and changes facing the medical community across the globe.

## College Of Undergraduate Study

Students who make application to Saint Theresa's Medical University for the pre-health science courses should have a minimum of 90 semester hours. The University provides course work in the pre-health sciences only and therefore, it is advised that students have sufficient credit or semester hours so that upon matriculation to the College of Undergraduate Study, successful completion of the available courses will lead to matriculation into either the College of Graduate Study, College of Pharmaceutical Science or the College of Medicine.

## Courses Available Through The Undergraduate College

General Biology with Laboratory	I and II	8-Credits
General Chemistry with Laboratory	I and I	8-Credits
College Mathematics	I and II	6-Credits
Organic Chemistry with Laboratory	I and II	8-Credits
Medical Physics with Laboratory I		4-Credits
Tropical Medicine and Biology		4-Credits

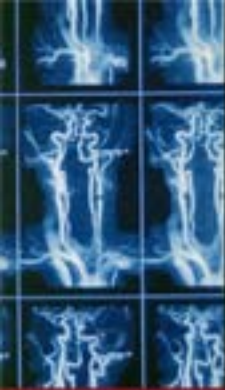
## The Master Of Science Degree

The Master of Science is awarded to students who complete the prescribed basic science course work in either the College of Medicine or the College of Pharmacy. Students within the College of Graduate Studies, must complete the prescribed course work leading to entrance into Doctoral Research leading to the dissertation. Upon completion of the course work leading to the initiation of dissertation research, the student in the College of Graduate Study is awarded the Master of Science degree.

## The Doctor Of Philosophy Degree

Saint Theresa's Medical University offers research programs leading to the final PhD degree in the following areas:

- Pharmaceutical Sciences
- Neuroscience
- Behavioral Medicine
- Neurology and Psychiatry
- Nutrition
- Diabetes & Cardiovascular Disorders
- HIV/AIDS and Infection Control
- Infectious Disease



Students interested in earning their PhD must successfully complete the same entrance and pre-health science requirements as those identified for the College of Pharmaceutical Sciences, and the College of Medicine. In addition these students must complete the basic science curriculum of either the College of Pharmaceutical Sciences, or that of the College of Medicine. The program into which the student would matriculate would depend on their area of research skill and interest.

Students are required to spend a minimum of one year in full time research activities. Health care professionals and Government Officials participate in the approval of the proposed area of research.

### **Structure of the College of Pharmaceutical Sciences**

The purpose of the College of Pharmacy and the Graduate School of Pharmaceutical Science is to prepare students for life-long learning and careers in the profession of pharmacy. The programs are outcome competency-based and emphasize an appreciation for ethical and spiritual values, which are foundations in the pharmaceutical, administrative, social and clinical sciences and are the basis for pharmaceutical care and research. In addition, the ability to think critically and communicate effectively; and possess an understanding of personal, professional and social responsibilities is stressed throughout the program.

The goals of the College of Pharmacy and the Graduate School of Pharmaceutical Science are to prepare graduates of the professional degree program through the provision of pharmaceutical care in a manner which promotes positive health care outcomes; prepare graduates of the Graduate School of Pharmaceutical Science to serve as pharmaceutical scientists, function as educators, and make contributions to the body of scientific knowledge; and provide programs, services and resources which maintain an environment for the personal and professional growth of faculty and students in their quest for academic excellence.

### **Professional Curriculum for the Doctor of Pharmacology/Pharmacy Degree**

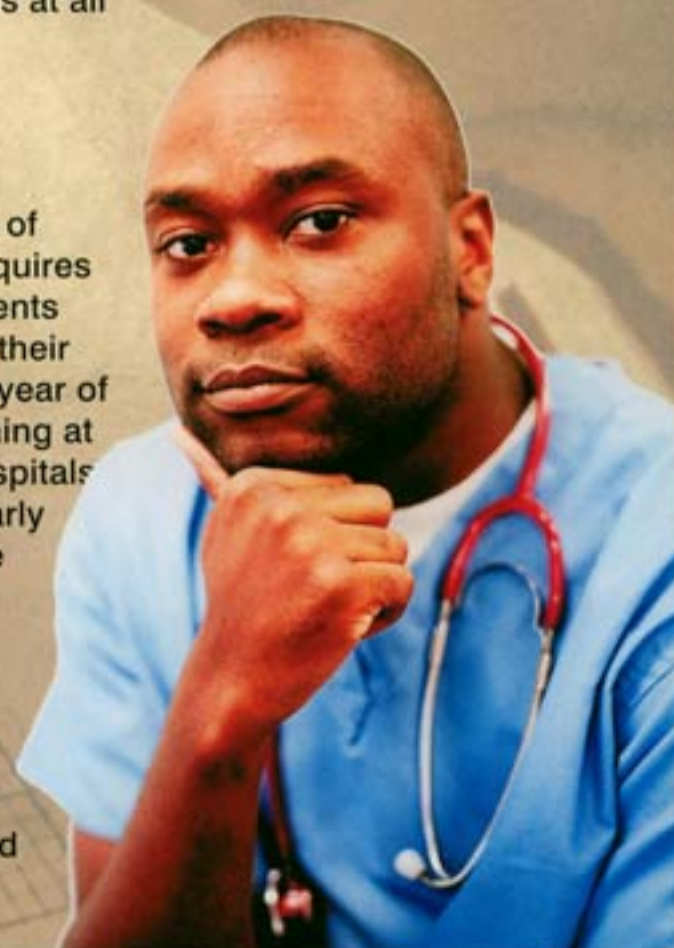
Consistent with changes in the profession towards more active involvement of the pharmacist and pharmaceutical scientist with the patient, the PharmD curriculum focuses on pharmaceutical care: management of the patient's drug therapies, development of strategies to achieve favorable patient outcomes and effective communication and delivery of patient education. To achieve these goals Saint Theresa's Medical University and our College of Pharmacy has elected to place increased emphasis on experiential education. Experiential education provides the student with the opportunity to translate the didactic and theoretical knowledge of the classroom into the skills required to function proficiently in the practice setting. Consequently, experiential education is an essential and critical component of the program.

### **College Of Medicine**

The College of Medicine introduces the student of Medical Sciences to the Art and the Science of Medicine. Student's prior to this time period, students spend all of their time developing the fundamental knowledge essential to interact with patients, residents, nurses and medical professionals at all levels.

### **Clinical Medicine**

The College of Medicine requires that all students accomplish their 3rd and 4th year of Clinical training at affiliated hospitals which in nearly all cases are accredited teaching hospitals throughout the USA, the United Kingdom and Australia.





*St. Kitts and Nevis* are two islands, and two versions of paradise. A two mile straight, six miles by air or a 45 minute ferry boat separates the islands. St. Kitts, the larger island, has the more varied terrain: volcanic peaks covered with lush green forests, sugar cane plantations and the southeast peninsula with its salt ponds which is ringed with coves black, mink-brown and white sand.

**Activities** include outstanding hiking through the islands' rain forests, golfing on internationally ranked golf courses, fishing, boating and diving or snorkeling through underwater reefs and unexplored wrecks. Historic points of interest include restored fortresses and haunted plantations.

**Climate** averages 79 degrees yearly; annual rainfall averages 55 inches; humidity is low, and constant northeast trade winds keep the islands cool.

**The Public Market** is a good place to meet the friendly locals and experience the lively chatter that accompanies every food stall. Bargaining is not common on St. Kitts, except at the Public Market. It is a mosaic of exotic and colorful sights, sounds and aromas. It is definitely worth a visit. Although it operates on a daily basis, Friday evenings and early Saturday mornings are the busiest days at the market. This is also the best time for visitors to witness the abundance of exotic food stalls and purchase all sorts of fresh fruits and vegetable and fresh fish caught just hours before.

**Shopping** in Basseterre, the capital, is a delight with small shops and malls, including the Pelican Mall and the TDC Mall, carrying a wide assortment of Kittitian delights and merchandise. You can buy locally designed clothing. You can also buy local crafts talented sculptures and craftsmen made from a variety of material and objects, including dried coconut shells, sea shells, wood, metal stones and fabric. Crystal, china, porcelain, gold and silver jewelry, tobacco, liquor, watches, leather goods and many more items are available duty free.



*Saint Theresa's Medical University*

West Indies: Saint Theresa's Medical University • Taylor's Range, Victoria Road • Basseterre, Saint Kitts • West Indies  
United States of America: US Office for Admissions • PO Box 708 • Latrobe • PA 15650 • USA  
[www.stmu.org](http://www.stmu.org) • 1-800-649-8175 • [info@stmu.org](mailto:info@stmu.org)